



REGIONAL SPECIALISED METEOROLOGICAL CENTRE-TROPICAL CYCLONES, NEW DELHI
TROPICAL WEATHER OUTLOOK

DEMS-RSMC TROPICAL CYCLONES NEW DELHI DATED 07.08.2021

TROPICAL WEATHER OUTLOOK FOR NORTH INDIAN OCEAN (THE BAY OF BENGAL AND ARABIAN SEA) VALID FOR NEXT 120 HOURS ISSUED AT 0600 UTC OF 07.08.2021 BASED ON 0300 UTC OF 07.08.2021.

BAY OF BENGAL:

YESTERDAY'S, LOW PRESSURE AREA NORTHERN PARTS OF EAST MADHYA PRADESH & NEIGHBOURHOOD PERSISTS OVER THE SAME REGION. AT 0300UTC OF TODAY, THE 7TH AUGUST 2021.

CONVECTION ASSOCIATED WITH THE LOW PRESSURE AREA OVER NORTH CENTRAL PARTS OF MADHYA PRADESH ADJOINING SOUTHWEST UTTAR PRADESH & NEIGHBOURHOOD OVERLAND. ASSOCIATED SCATTERED LOW AND MEDIUM CLOUDS WITH EMBEDDED MODERATE TO INTENSE CONVECTION OVER SOUTHEAST RAJASTHAN EXT NORTHWEST MADHYA PRADESH (MINIMUM CLOUD TOP TEMPERATURE (CTT) IS MINUS 56° C.

SCATTERED LOW AND MEDIUM CLOUDS WITH EMBEDDED MODERATE TO INTENSE CONVECTION OVER EAST & SOUTHWEST BAY OF BENGAL ARAKAN COAST NORTH ANDAMAN SEA GULF OF MARTABAN.

PROBABILITY OF CYCLOGENESIS (FORMATION OF DEPRESSION) DURING NEXT 120 HRS):

24 HOURS	24-48 HOURS	48-72 HOURS	72-96 HOURS	96-120 HOURS
NIL	NIL	NIL	NIL	NIL

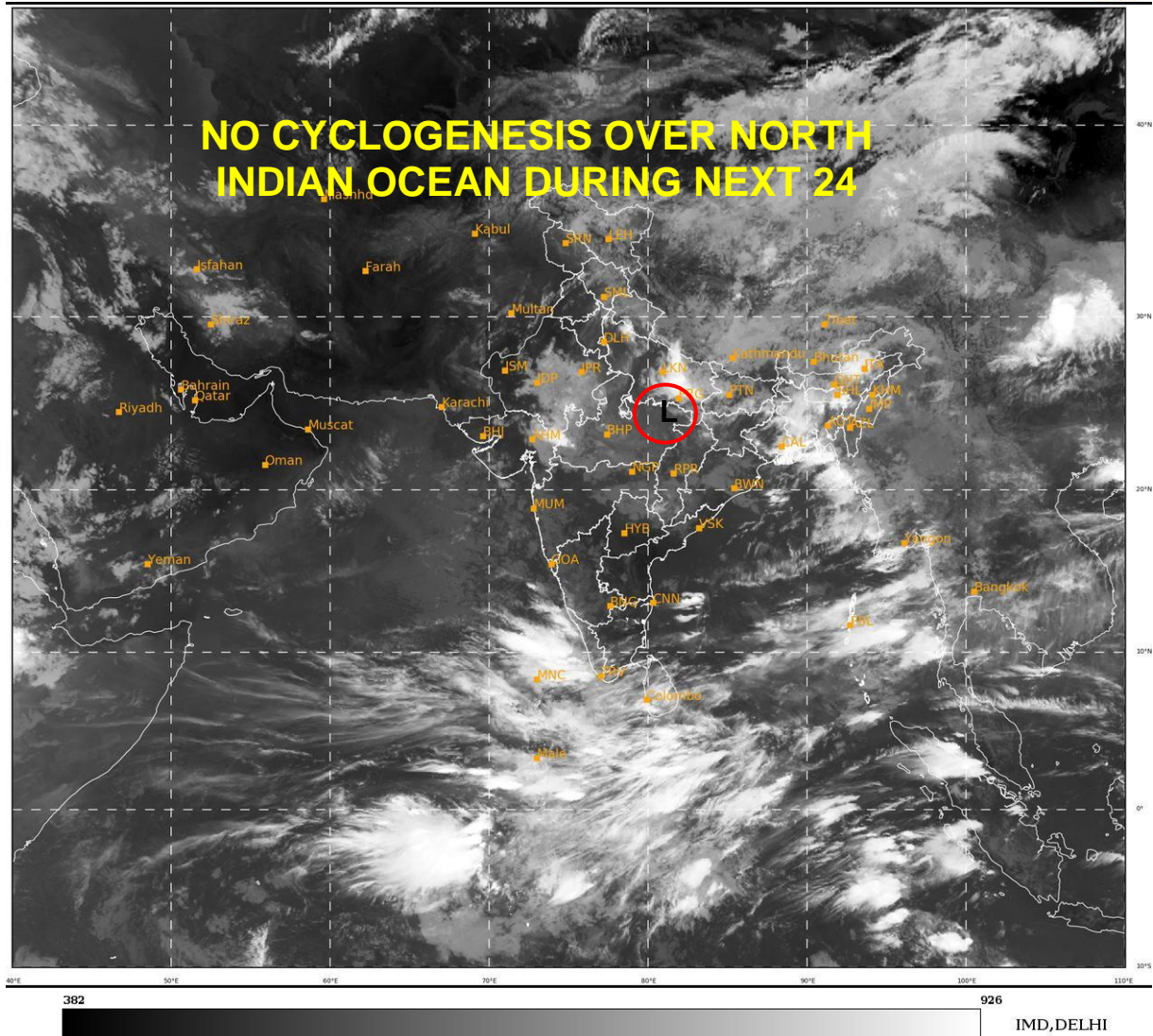
ARABIAN SEA:

SCATTERED LOW AND MEDIUM CLOUDS WITH EMBEDDED MODERATE TO INTENSE CONVECTION OVER SOUTHEAST ARABIAN SEA AND COMORIN.

PROBABILITY OF CYCLOGENESIS (FORMATION OF DEPRESSION) DURING NEXT 120 HRS):

24 HOURS	24-48 HOURS	48-72 HOURS	72-96 HOURS	96-120 HOURS
NIL	NIL	NIL	NIL	NIL

REMARKS: NIL



- **L STANDS FOR LOW PRESSURE AREA**